

# ***RV-12iS***

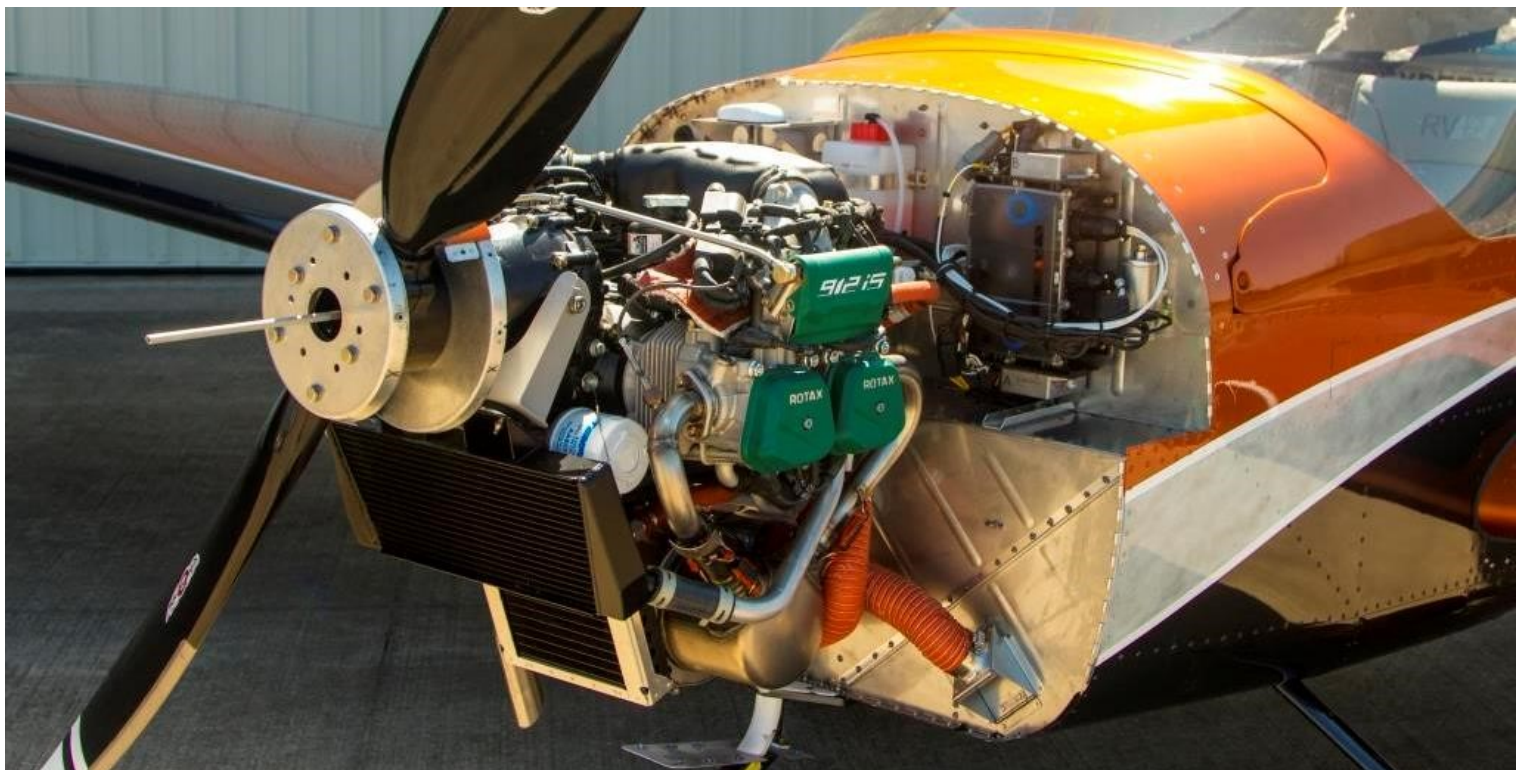


## ***A “TOTAL PERFORMANCE” LIGHT SPORT AIRPLANE***

Van's Aircraft never rests. We constantly strive to improve what many consider to be the finest aircraft designs and homebuilt kits in the industry. The RV-12 took the E-LSA market by storm in 2008. Today, over 1,200 kit starts have been sold with well over 650 flying RV-12s in both the homebuilt E-LSA and factory built S-LSA form. Impressive is an understatement.

***NOW MEET THE***

**RV12iS**



# Yes, Van's Aircraft is now offering the Rotax fuel injected 912iS as an engine option!

Benefits of Rotax's latest 912 Series power plant:

- Improved fuel economy
- Improved climb rate
- Easier installation
- Easier maintenance: no carburetor balancing and CAN error diagnostics
- Extra electrical power available allows more lighting and NAV equipment options for flight schools

## But that is just the beginning!

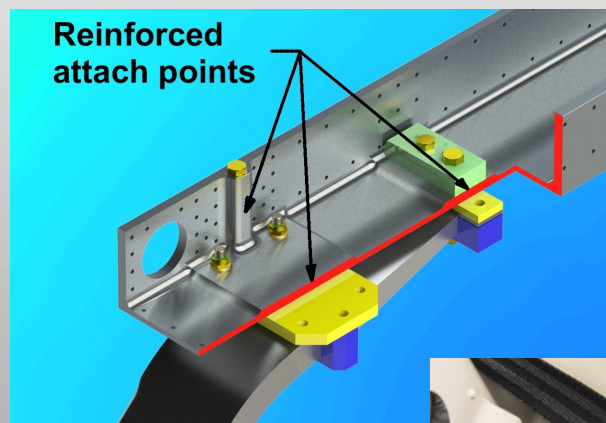
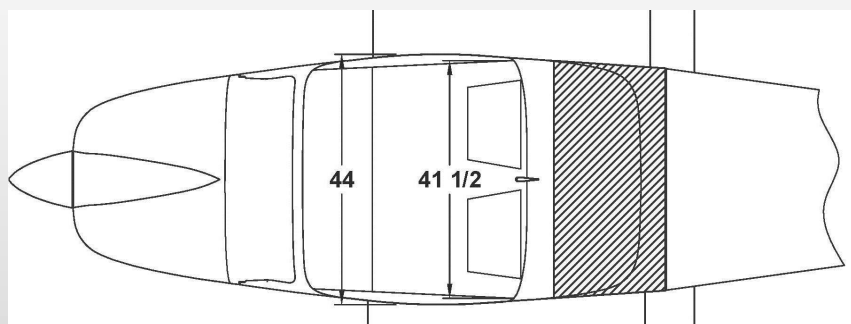
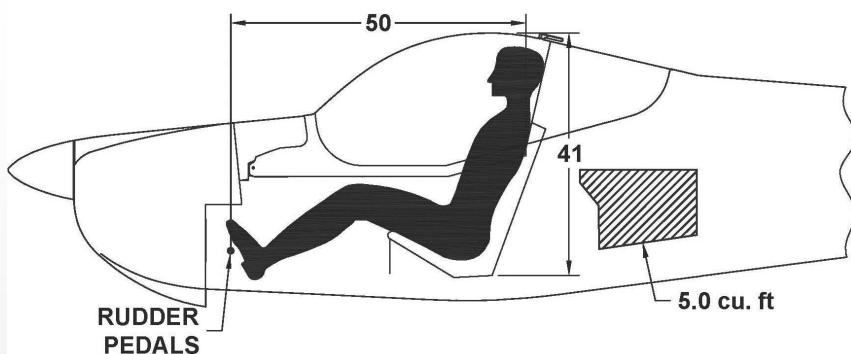
We have listened and learned since 2008, and are proud to announce that Van's has made many improvements to the RV-12 air-frame and systems based on real world customer feedback. Among them are:

- Newly designed cowling with forward mounted coolers. Easier to remove, plus it yields greater cooling on the ground and in the climb.
- New throttle quadrant design which eliminates the need for special carb return springs in the 912ULS model engine.
- New and improved landing main landing gear attachment. More rugged and better suited to the training environment. Check out our video on the gear tear off test. Unbelievable!
- New transversely mounted fuel tank gives more baggage volume and easier loading. Makes inspections and maintenance much easier.
- Same tank capacity but has much less unusable fuel in climb. Larger fuel filler neck mounted below the Plexiglas rear window on the co-pilot side.
- Newly designed adjustable seats.
- Electric Flaps

## Other features that set the RV-12iS apart:

Removable wings. The RV-12iS was designed from the start to be "trailer able". Light, easily removable wings make it practical to keep the airplane at home or in the corner of the hangar where nothing else fits.

Shortest time to build: we conservatively estimate the builder will spend 700-900 hours to complete an unpainted RV-12iS





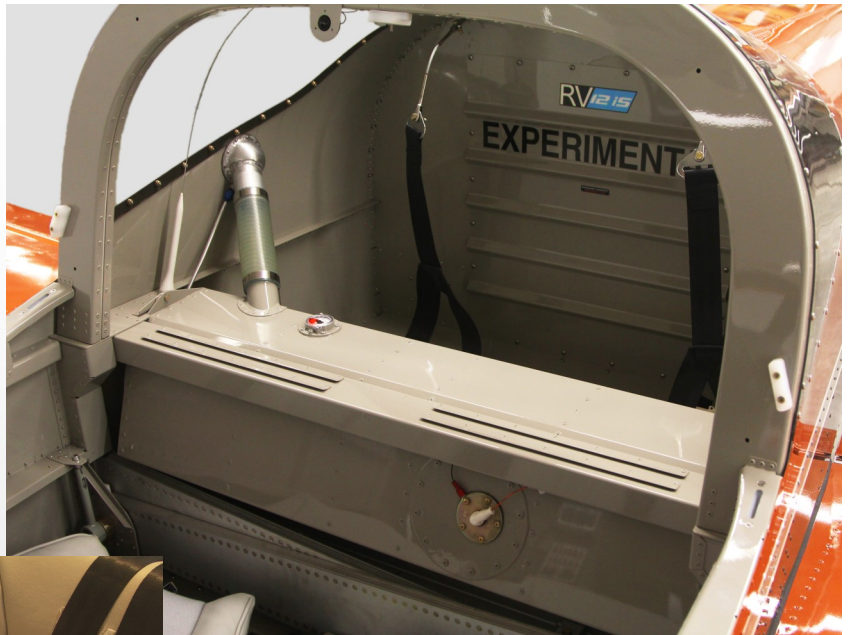
## The culmination of 40 years experience...

manufacturing the best aircraft kits available. The result is an exceptionally complete kit with parts that fit very well.

All metal parts have pre-punched fastener holes.

All hardware and rivets are included.

Every detail of the engine installation, instrument panel, fuel system, landing gear and airframe is carefully designed and documented for building ease and performance.



Kit Assembly Instructions are composed of computer generated, exploded isometric representations with step by step instructions on each page.

Sold in six separate sub-kits, no need to buy the whole airplane at once!

## A Technologically Advanced Panel

The RV-12S offers two choices of EFIS panels: a Dynon HDX Touch or a Garmin G3X Touch configurable as single or dual displays.

These feature synthetic vision, GPS navigation, Mode S transponder with ADS-B Out, AOA indicator, Flight planning and Engine Management System to name a few.

A Garmin GTR 200B radio/intercom, ACK ELT and an ergonomically-designed switch & fuse panel complete the package.

Options for ADS-B in/out, dual-axis autopilot and Garmin GTN 650 navigator are available.



RV-12iS SPECIFICATIONS		RV-12iS PERFORMANCE <small>GROSS WEIGHT, STATUTE MILES, OPTIONAL WHEEL PANTS INSTALLED</small>			RV-12iS PRICES <small>SUBJECT TO CHANGE WITHOUT NOTICE</small>	
		912iS		912ULS		
SPAN	26' 9"	TOP SPEED	144 mph	139 mph	FASTENER KIT <small>(order w/first kit)</small>	\$380
WING AREA	127 sq. ft.	CRUISE SPEED <small>(7500' @ 5500 rpm)</small>	135 mph (ECO Mode)	136 mph	TAIL KIT	\$2,775
LENGTH	19' 11"	CRUISE SPEED <small>(7500' @ 5000 rpm)</small>	121 mph (ECO Mode)	120 mph	WING KIT	\$6,750
EMPTY WEIGHT	775 lbs With Options	STALL SPEED <small>(with flaps)</small>	47 mph	47 mph	FUSELAGE KIT	\$6,425
GROSS WEIGHT	1320 lbs	TAKEOFF DISTANCE	700 ft.	700 ft.	FINISH KIT	\$10,595
WING LOADING <small>(gross weight)</small>	10.4 lbs/sq. ft.	LANDING DISTANCE	525 ft.	525 ft.	AVIONICS KIT <small>(depending on options)</small>	\$17,000- \$27,500
POWER LOADING <small>(gross weight)</small>	13.2 lbs/hp	RATE OF CLIMB	1000 fpm	900 fpm	POWERPLANT KIT	\$30,650 (ULS) \$35,350 (iS)
FUEL CAPACITY	20 US gallons	CEILING <small>(Absolute)</small>	19,200 ft.	13,800 ft.	TOTAL <small>(depending on options)</small>	\$74,575 - \$87,975 <small>(subject to change with final kit pricing)</small>
CABIN WIDTH	43"	RANGE <small>(7500' @ 5500 rpm)</small>	581 miles (ECO Mode)	555 miles		
BAGGAGE	75 lbs	RANGE <small>(7500' @ 5000 rpm)</small>	660 miles (ECO Mode)	614 miles		
ENGINE	Rotax 912iS					
PROPELLER	Sensenich g/a					



### Demonstration Rides

Van's Aircraft offers RV-12iS demonstration rides at our factory location located in Aurora, Oregon. In addition, there are a number of RV-12s in use at flight schools around the country to help you see what flying this airplane is all about.

See the [flyrv12.com](http://flyrv12.com) website for details!



**VAN'S AIRCRAFT**  
TOTAL PERFORMANCE

14401 Keil Road NE, Aurora, Oregon, USA 97002

PHONE 503-678-6545 · FAX 503-678-6560 · [www.vansaircraft.com](http://www.vansaircraft.com) · [info@vansaircraft.com](mailto:info@vansaircraft.com)

8/2019